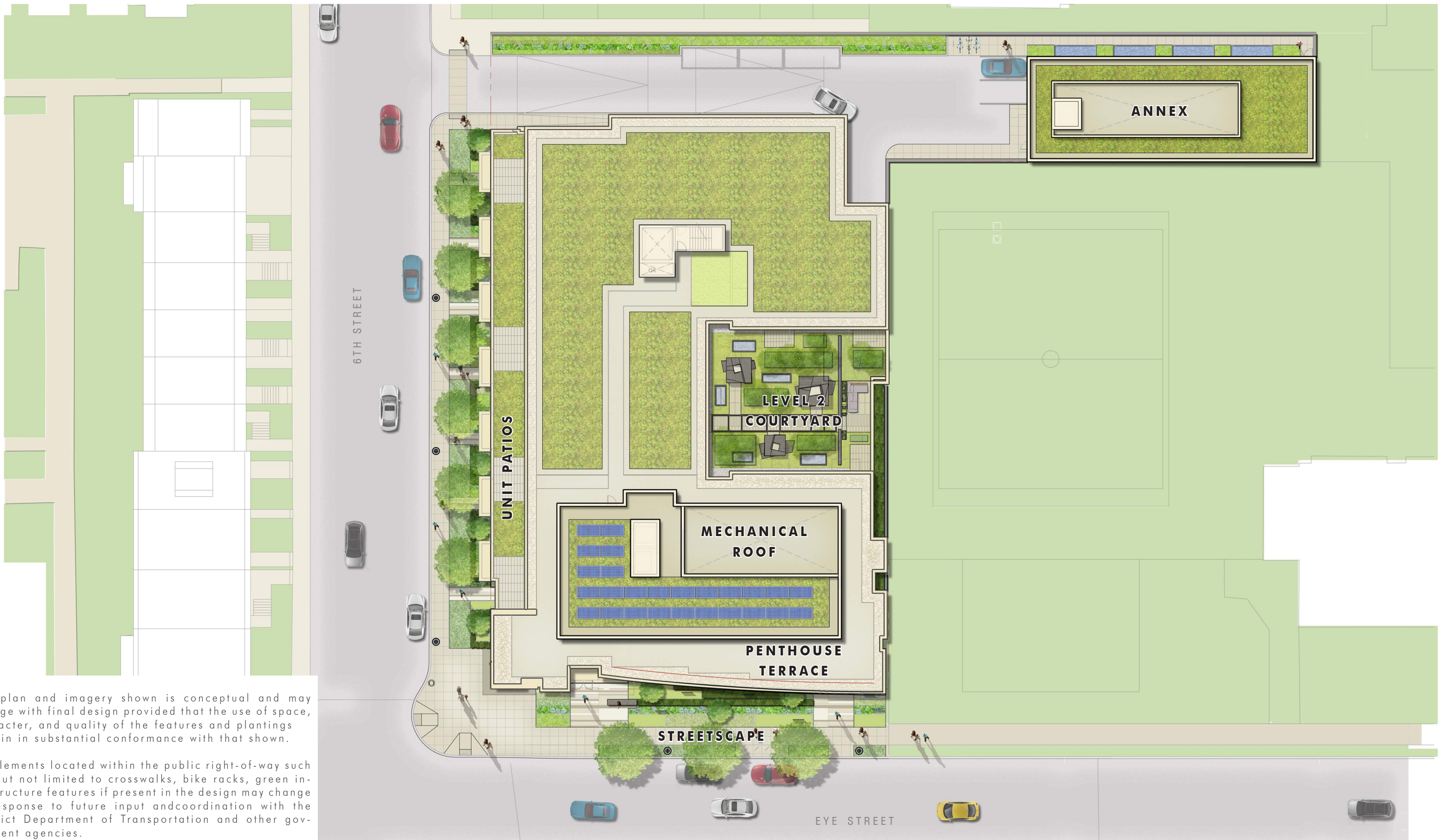


LEFT BLANK INTENTIONALLY



*The plan and imagery shown is conceptual and may change with final design provided that the use of space, character, and quality of the features and plantings remain in substantial conformance with that shown.

*All elements located within the public right-of-way such as, but not limited to crosswalks, bike racks, green infrastructure features if present in the design may change in response to future input and coordination with the District Department of Transportation and other government agencies.

THE BARD REDEVELOPMENT

COMPOSITE PLAN

PARKER RODRIGUEZ

landscape architects



PARTERRE GARDENS



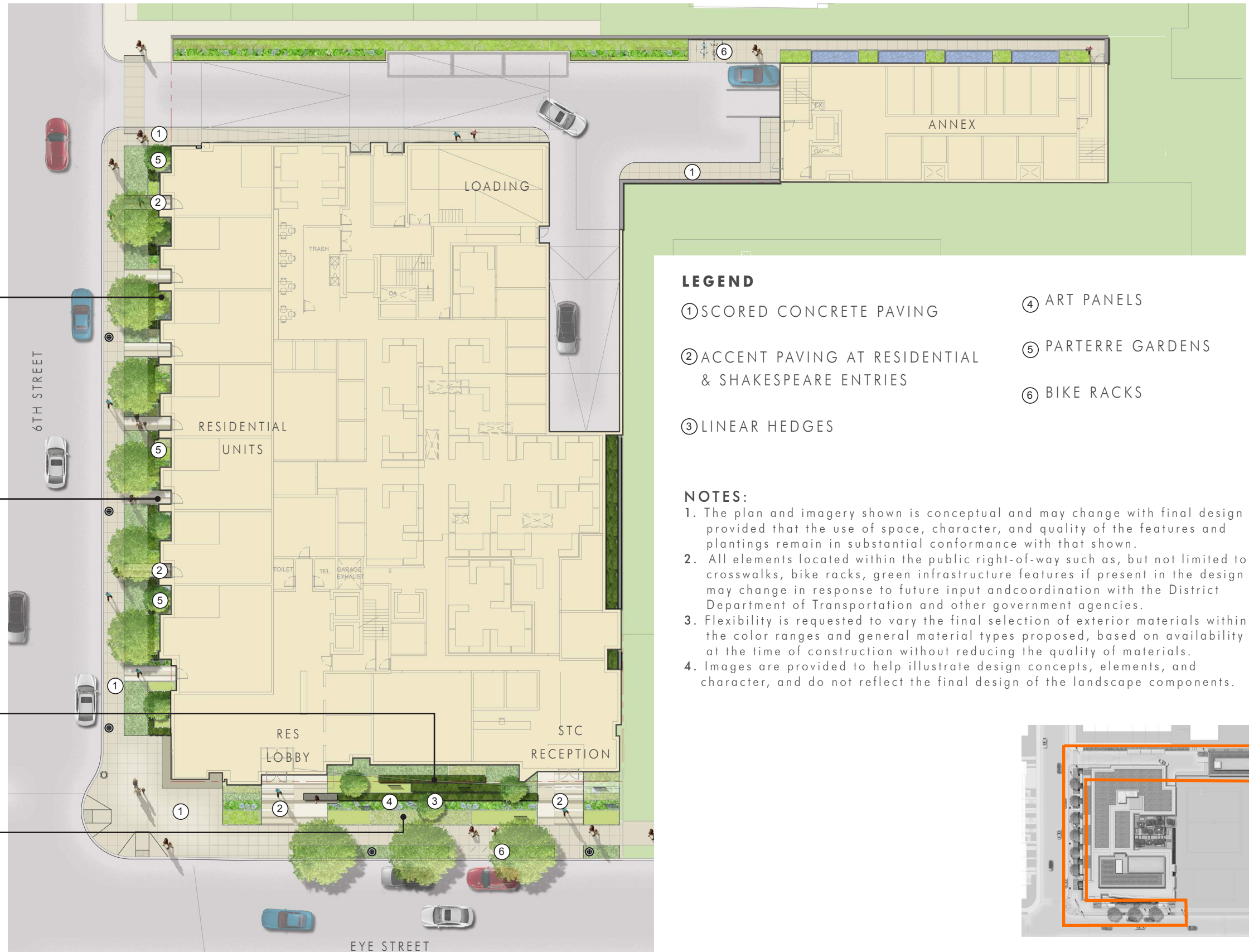
ACCENT PAVING



LINEAR HEDGES



BANDED PLANTING

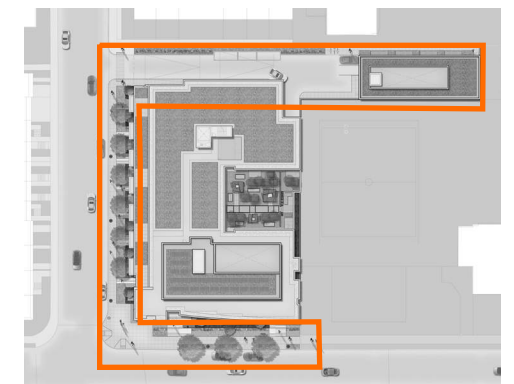


LEGEND

- ① SCORED CONCRETE PAVING
- ② ACCENT PAVING AT RESIDENTIAL & SHAKESPEARE ENTRIES
- ③ LINEAR HEDGES
- ④ ART PANELS
- ⑤ PARTERRE GARDENS
- ⑥ BIKE RACKS

NOTES:

1. The plan and imagery shown is conceptual and may change with final design provided that the use of space, character, and quality of the features and plantings remain in substantial conformance with that shown.
2. All elements located within the public right-of-way such as, but not limited to crosswalks, bike racks, green infrastructure features if present in the design may change in response to future input and coordination with the District Department of Transportation and other government agencies.
3. Flexibility is requested to vary the final selection of exterior materials within the color ranges and general material types proposed, based on availability at the time of construction without reducing the quality of materials.
4. Images are provided to help illustrate design concepts, elements, and character, and do not reflect the final design of the landscape components.





1 STONE PAVING



2 PARTERRE GARDENS



3 STANDARD D.C. CONCRETE PAVING



* The perspective imagery shown is conceptual and may change with final design provided that the use of space, character, and quality of the features and plantings remain in substantial conformance with that shown.

* All elements located within the public right-of-way such as, but not limited to crosswalks, bike racks, green infrastructure features may change in response to future input and coordination with the District Department of Transportation and other government agencies.



1 STONE PAVING



2 LINEAR HEDGES



3 STANDARD D.C. CONCRETE PAVING



* The perspective imagery shown is conceptual and may change with final design provided that the use of space, character, and quality of the features and plantings remain in substantial conformance with that shown.

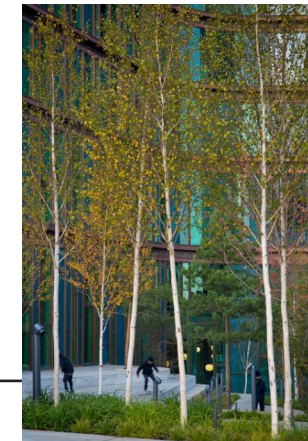
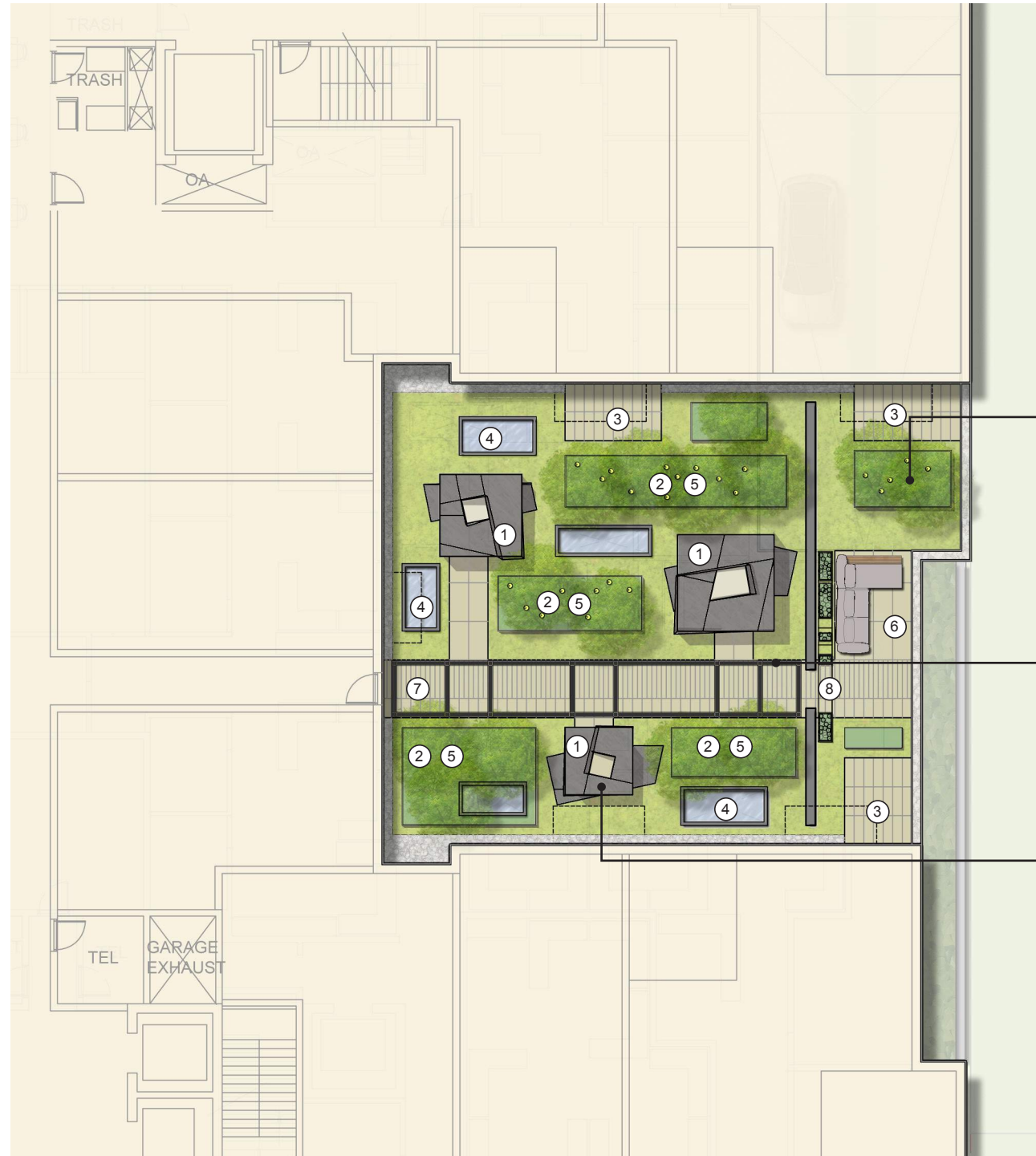
* All elements located within the public right-of-way such as, but not limited to crosswalks, bike racks, green infrastructure features may change in response to future input and coordination with the District Department of Transportation and other government agencies.



- NOTES:**
1. Art panels and other improvements in the public space are subject to approval by D.C. public space officials.
 2. Flexibility is requested to vary the selection of art panel materials, imagery, and quotations within the general material types proposed.

LEGEND

- ① PAVILIONS
- ② BIRCH GROVE
- ③ UNIT PATIOS
- ④ SKYLIGHTS
- ⑤ ACCENT LIGHTS
- ⑥ OVERLOOK
- ⑦ PERGOLA
- ⑧ PLANTED WALL



RAISED PLANTERS

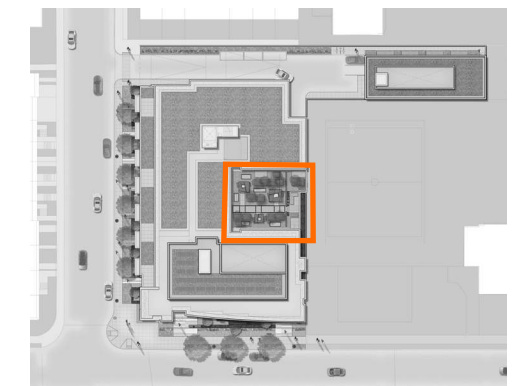


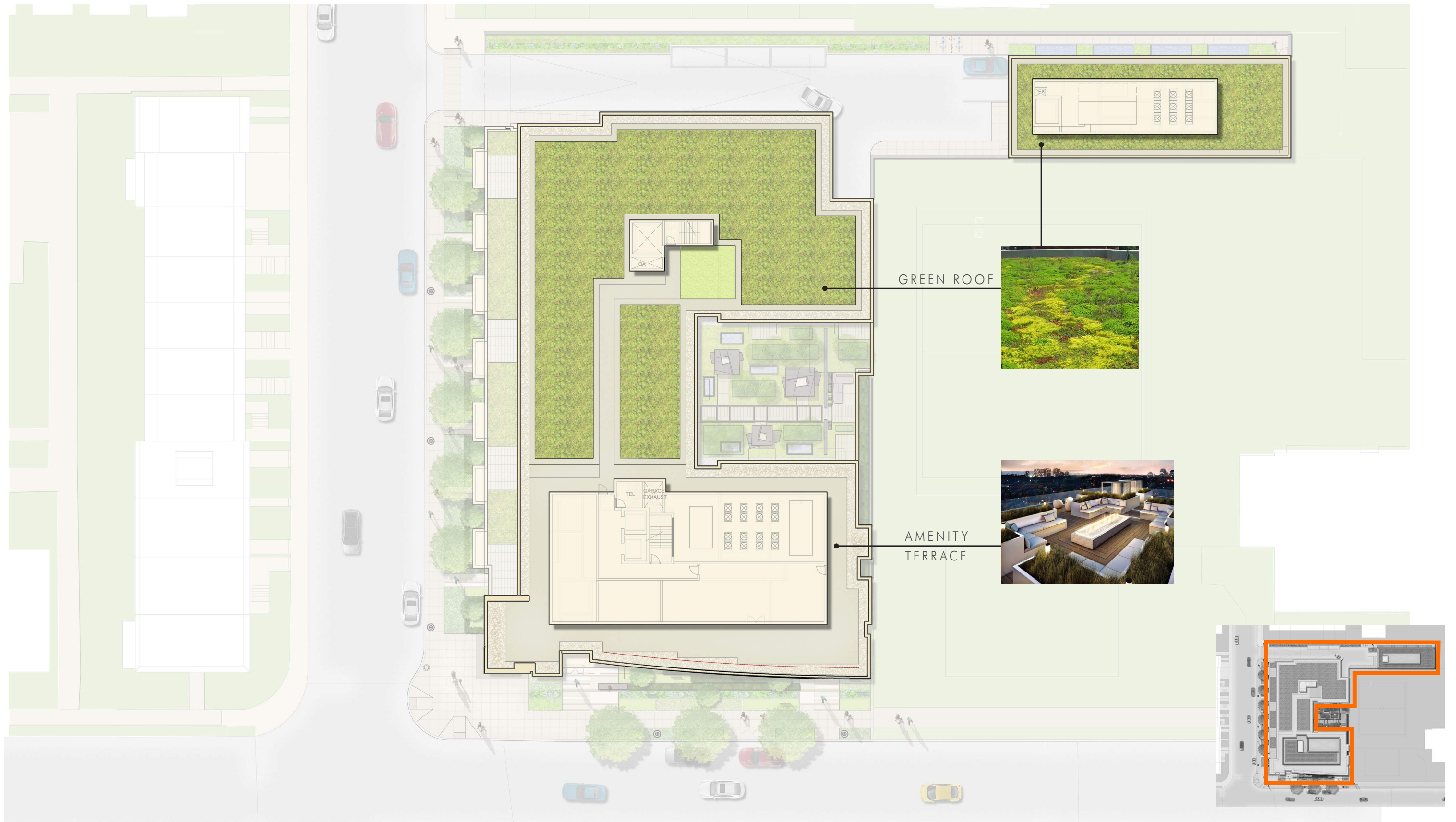
PERGOLA STRUCTURE



PAVILIONS

* The plan and imagery shown is conceptual and may change with final design provided that the use of space, character, and quality of the features and plantings remain in substantial conformance with that shown.



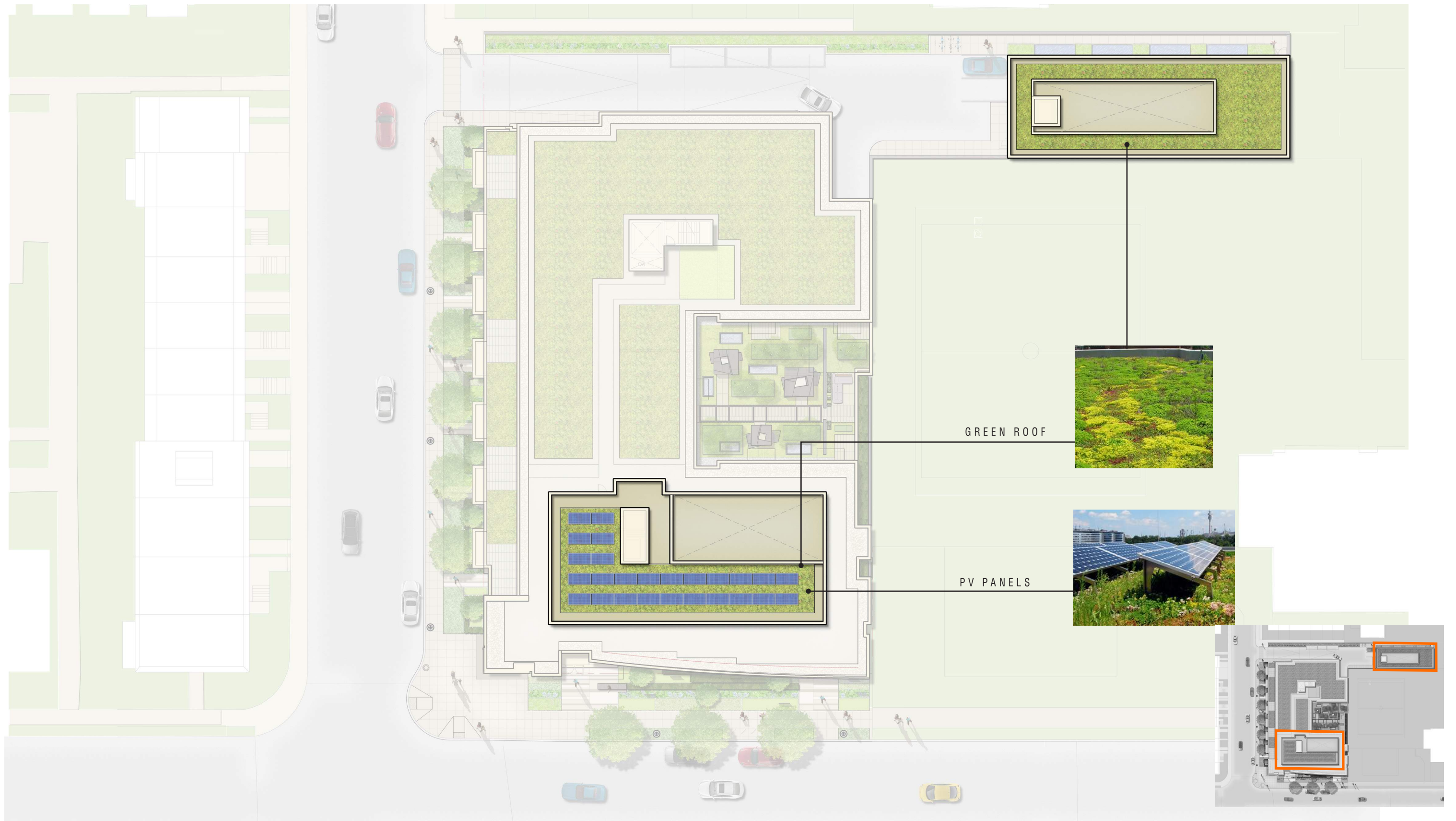


THE BARD REDEVELOPMENT

PENTHOUSE TERRACE

PARKER RODRIGUEZ

landscape architects



Green Area Ratio Scoresheet					
***	Address	501 Eye Street	Square	Lot	Zone District
	Other		498	52	MU-4
	Lot size (enter this value first) *	36,476	Minimum Score	Multiplier	GAR Score
			0.3		SCORE: 0.310
Landscape Elements					
		Square Feet	Factor		Total
A Landscaped areas (select one of the following for each area)					
1	Landscaped areas with a soil depth < 24"	square feet 0	0.30		-
2	Landscaped areas with a soil depth ≥ 24"	square feet 477	0.60		286.2
3	Bioretention facilities	square feet 0	0.40		-
B Plantings (credit for plants in landscaped areas from Section A)					
1	Groundcovers, or other plants < 2' height	square feet 0	0.20	Native Bonus square feet	-
2	Plants ≥ 2' height at maturity - calculated at 9-sf per plant	# of plants 80	720 0.30	# of plants	216.0
3	New trees with less than 40-foot canopy spread - calculated at 50 sq ft per tree	# of trees 0	0 0.50	# of trees	-
4	New trees with 40-foot or greater canopy spread - calculated at 250 sq ft per tree	# of trees 0	0 0.60	# of trees	-
5	Preservation of existing tree 6" to 12" DBH - calculated at 250 sq ft per tree	# of trees 0	0 0.70	# of trees	-
6	Preservation of existing tree 12" to 18" DBH - calculated at 600 sq ft per tree	# of trees 0	0 0.70	# of trees	-
7	Preservation of existing trees 18" to 24" DBH - calculated at 1300 sq ft per tree	# of trees 0	0 0.70	# of trees	-
8	Preservation of existing trees 24" DBH or greater - calculated at 2000 sq ft per tree	# of trees 0	0 0.80	# of trees	-
9	Vegetated wall, plantings on a vertical surface	square feet 0	0.60	square feet	-
C Vegetated or "green" roofs					
1	Over at least 2" and less than 8" of growth medium	square feet 0	0.60	square feet	-
2	Over at least 8" of growth medium	square feet 13,500	0.80	square feet	10,800.0
D Permeable Paving***					
1	Permeable paving over 6" to 24" of soil or gravel	square feet 0	0.40		-
2	Permeable paving over at least 24" of soil or gravel	square feet 0	0.50		-
E Other					
1	Enhanced tree growth systems***	square feet 0	0.40		-
2	Renewable energy generation	square feet 0	0.50		-
3	Approved water features	square feet 0	0.20		-
F Bonuses					
		sub-total of sq ft = 14,697			
1	Native plant species	square feet 0	0.10		-
2	Landscaping in food cultivation	square feet 0	0.10		-
3	Harvested stormwater irrigation	square feet 0	0.10		-
					Green Area Ratio numerator = 11,302
*** Permeable paving and structural soil together may not qualify for more than one third of the Green Area Ratio score.					
Total square footage of all permeable paving and enhanced tree growth.					

501 EYE STREET - SW WASHINGTON, DC						
Typical Plant Schedule						
QTY	KEY	BOTANICAL NAME	COMMON NAME	SIZE	COND.	COMMENTS
Canopy Trees						
	AR	<i>Acer rubrum</i>	Red Maple	2-1/2" caliper	B&B	Native
	GB	<i>Ginkgo biloba</i> 'Princeton Sentry'	Princeton Sentry Ginkgo	2-2 1/2" cal.	B&B	Single leader; full branching; males only
	JS	<i>Juniperus scopulorum</i> 'Skyrocket'	Skyrocket Juniper	8-10' ht	B&B	Native; heavy; matched; symmetrical
Ornamental Trees						
	BN	<i>Betula nigra</i> 'Dura Heat'	Dura Heat River Birch	8-10' ht.	B&B	Native; multistem; 3 stems minimum, full branching
	MV	<i>Magnolia virginiana</i>	Sweet Bar Magnolia	6-8' ht.	B&B	Native; multistem; 3 stems minimum, full branching
	AC	<i>Amelanchier canadensis</i>	Serviceberry	6' ht.	B&B	Native; multistem; 3 stems minimum, full branching
Evergreen Shrubs						
	BX	<i>Buxus</i> x 'Green Mountain'	Boxwood	30-36" ht.	Cont.	full branching
	JN	<i>Jasminum nudiflorum</i>	Winter Jasmine	24-30" ht.	Cont.	full branching
	PL	<i>Prunus laurocerasus</i> 'Otto Luyken'	Otto Luyken's Cherry Laurel	24-30" ht.	Cont.	full branching
	SS	<i>Sarcococca hookeriana</i> var. <i>humilis</i>	Dwarf Sweetbox	18-24" ht.	Cont.	full branching
Perennials						
	AMS	<i>Amonia hubrichtii</i>	Blue Star	4 gal.	Cont.	Native, 12" o.c.
	DCT	<i>Deshampsia cespitosa</i> 'Goldtau'	Gold Dew Tufted Hair Grass	2 gal.	Cont.	Non-Native, 12" o.c.
	DRY	<i>Dryopteris intermedia</i>	Evergreen Wood Fern	4 gal.	Cont.	Native, 18" o.c.
	EPP	<i>Echinacea pallida</i>	Purple Coneflower	2 gal.	Cont.	Native, 18" o.c.
	HOR	<i>Helleborus orientalis</i>	Lentin Rose	1 gal.	Cont.	Non-Native, 12" o.c.
	JEF	<i>Juncus effusus</i>	Soft Rush	1 gal.	Cont.	Non-Native, 12" o.c.
	LIA	<i>Liatris spicata</i>	Blazing Star	4 gal.	Cont.	Native, 12" o.c.
	MER	<i>Mertensia virginica</i>	Virginia Bluebells	4 gal.	Cont.	Native, 12" o.c.
	OSM	<i>Osmunda cinnamomea</i>	Cinnamon Fern	4 gal.	Cont.	Native, 18" o.c.
	PAH	<i>Pennisetum alopecuroides</i> 'Moundry'	Black Fountain Grass	2 gal.	Cont.	Non-Native, 30" o.c.
	RUD	<i>Rudbeckia hirta</i>	Black-eyed Susan	4 gal.	Cont.	Native, 12-18" o.c.
	SAL	<i>Salvia x sylvestric</i> 'May Night'	May Night Sage	2 gal.	Cont.	Non-Native, 18" o.c.
Grasses / Groundcovers						
	CAK	<i>Calamagrostis acutiflora</i> 'Karl Foerster'	Feather Reed Grass	2 gal.	Cont.	Non-Native; 18-24" o.c.
	FEB	<i>Festuca glauca</i> 'Elijah Blue'	Blue Fescue	2 gal.	Cont.	Non-Native, 18" o.c.
	LMR	<i>Liriope muscari</i> 'Big Blue'	Big Blue Lilyturf	1 gal.	Cont.	Non-Native, 12" o.c.
	NAS	<i>Nasella tenuissima</i>	Mexican Feather Grass	2 gal.	Cont.	Non-Native, 12-24" o.c.
	PAN	<i>Panicum virgatum</i>	Switchgrass	2 gal.	Cont.	Native, 18" o.c.
	PHL	<i>Phlox stolonifera</i> 'Sherwood Purple'	Creeping Phlox	4 gal.	Cont.	Native, 12" o.c.
	TIA	<i>Tiarella cordifolia</i>	Foam Flower	2 gal.	Cont.	Native, 12" o.c.
Annuals / Bulbs						
	ALI	<i>Allium sphaerocephalum</i>	Drumstick Allium	bulb	bulb	
	IVS	<i>Iris siberica</i> 'Caesar's Brother'	Siberian Iris	bulb	bulb	
	IPO	<i>Ipomoea batatas</i>	Sweet Potatoe Vine	1 gal.	Cont.	12" o.c.
Notes:						
All materials' specifications shall be in accordance with the industry standard for grading plant material - The American Standard for Nursery Stock (ANSI Z60.1).						
Maintenance of all trees and landscape materials shall conform to accepted industry standards set forth by the Landscape Contractors Association, American						

* Plant selections may change with final design provided that the character and quality of the planting material selections remain in substantial conformance with that shown.

